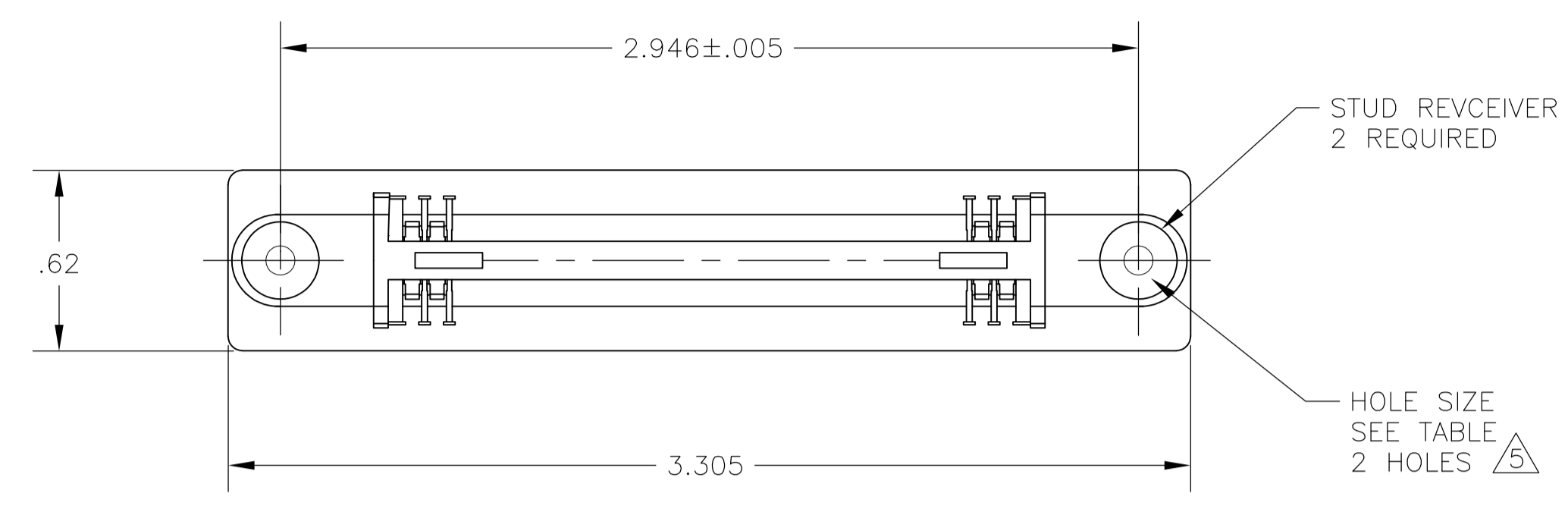
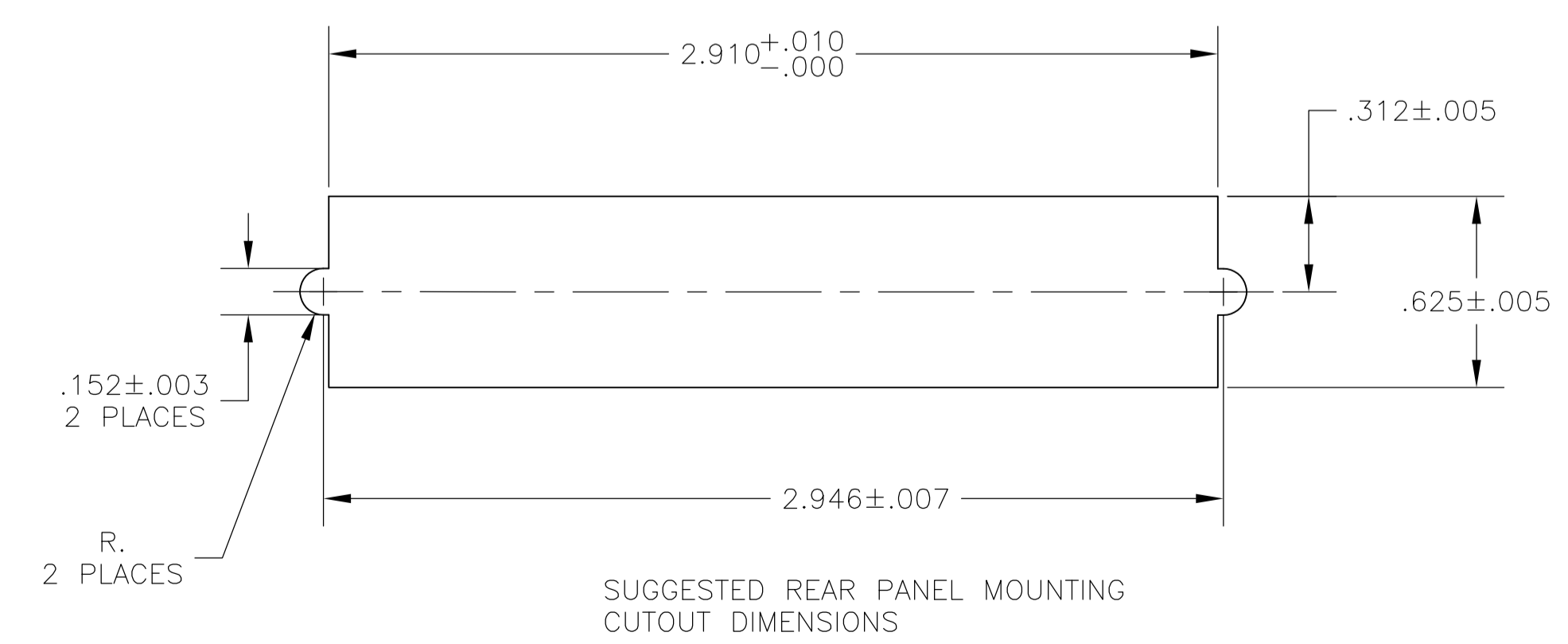
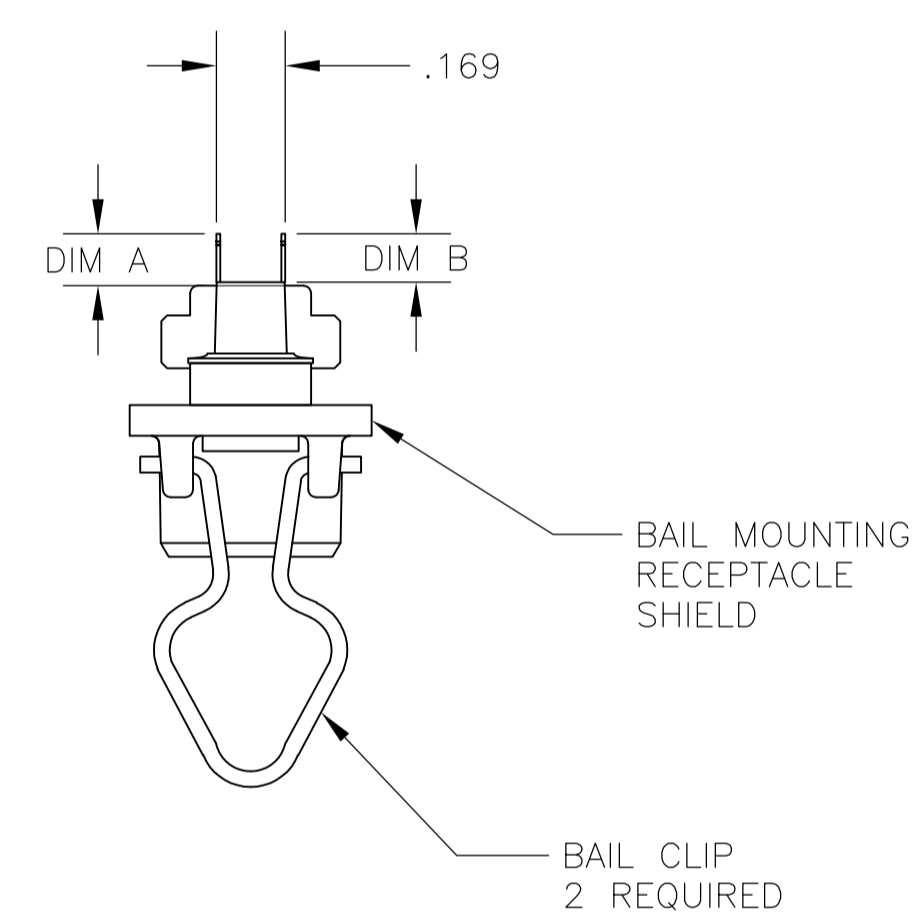
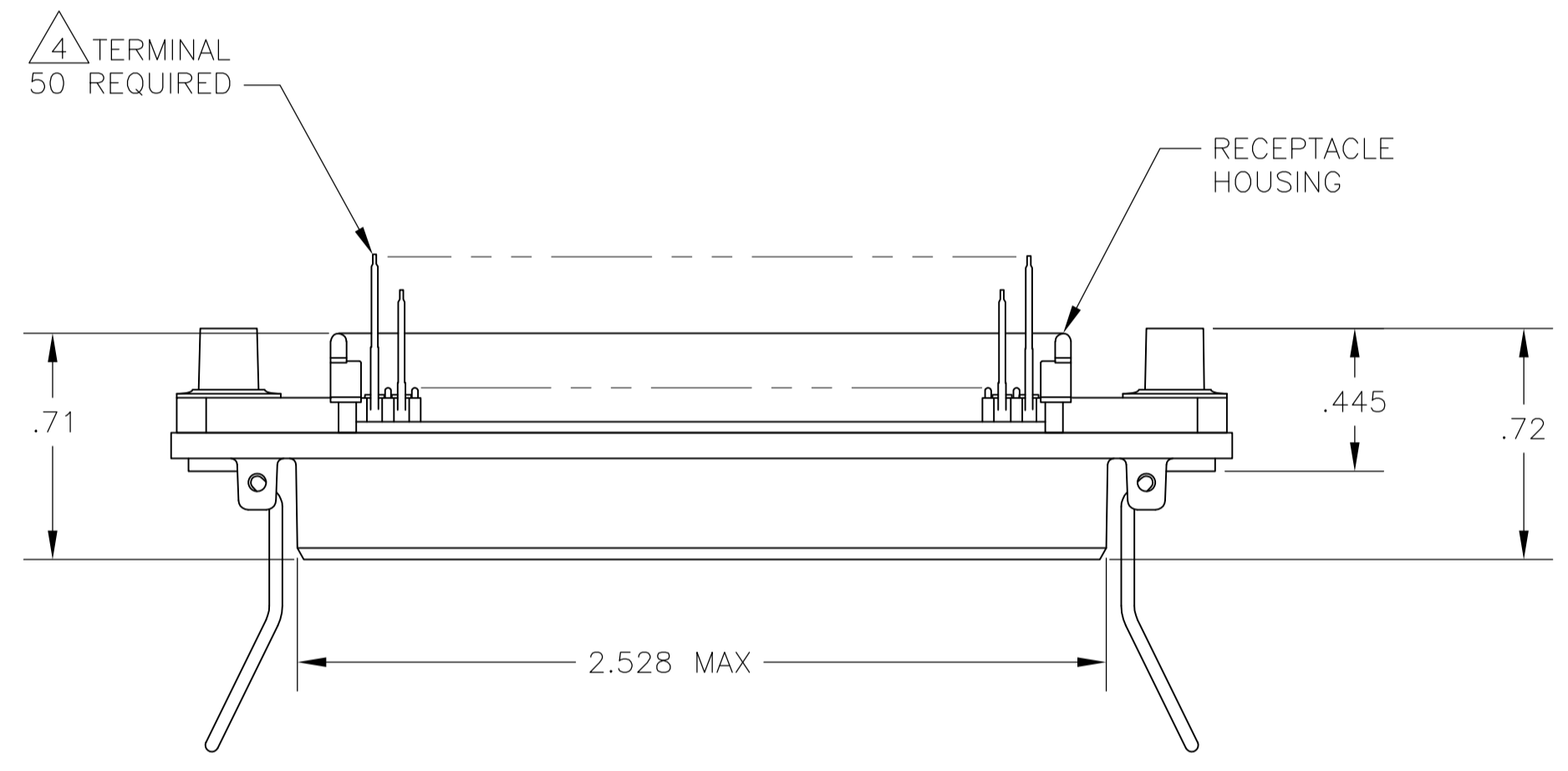


LOC		DIST		REVISIONS			
GP	00	REV	DATE	BY	CHK	APPV	
B		REVISED PER ECO-08-007327	22JUL08	BM	WM		



1. THE CONTACT SURFACES OF THE TERMINALS ARE COATED WITH LUBRICANT.
2. ALL DIMENSIONS SHOWN ARE FOR REFERENCE ONLY UNLESS OTHERWISE SPECIFIED.
3. MATERIAL:  
 HOUSING - THERMOPLASTIC, BLACK  
 TERMINAL - PHOS BRONZE PLATED WITH EITHER .000030 MINIMUM GOLD PLATE OR GOLD FLASH OVER PALLADIUM NICKEL PLATE, .000030 MINIMUM TOTAL ON MATING SURFACE, .000120 MINIMUM TIN PLATE ON TAILS OVER .000050 MINIMUM NICKEL UNDERPLATE OVER ENTIRE TERMINAL.  
 STUD RECEIVER - STAINLESS STEEL  
 BAIL CLIP - STAINLESS STEEL  
 SHIELD - NICKEL PLATED DIE CASTING.
4. CENTER-TO-CENTER SPACING OF TERMINALS IS .085.
5. HOLES TO BE TAPPED AFTER PLATING.



.232 + PANEL THICKNESS	.197 + PCB THICKNESS	4-40 UNC-2B	.185	.200	5554216-4
PANEL SIDE	PCB SIDE	HOLE SIZE	.120	.135	5554216-3
RECOMMENDED HARDWARE FOR SCSI (PAN HEAD SCREW LENGTH)		HOLE SIZE	DIM B	DIM A	PART NO
THIS DRAWING IS A CONTROLLED DOCUMENT.		DESIGNED BY: B. LATTUCA	DATE: 16AUG05	Tyco Electronics Corporation Harrisburg, PA 17105-3608	
DIMENSIONS: INCHES		CHECKED BY: W. MILLHIMES	DATE: 16AUG05	NAME: RCPT ASSY, 50 POSN, VERT MTG, SHLD, BAIL LK, CHAMP	
TOLERANCES UNLESS OTHERWISE SPECIFIED:		APPROVED BY: M. WALMSLEY	DATE: 16AUG05	PRODUCT SPEC: -	
0. PLC	± .005	APPLICATION SPEC: -		SIZE: A1	
1. PLC	± .003	WEIGHT: -		CAGE CODE: 00779	
2. PLC	± .002	CUSTOMER DRAWING		DRAWING NO: 5554216	
3. PLC	± .001	SCALE: 2:1		SHEET 1 OF 1	
4. PLC	± .0005	RESTRICTED TO:		REV B	
ANGLES	± .0005				